

Specificatie
Voor

PIJP MATERIALEN

PIPE CLASS

C15

PIPING DESIGN – TOETS - PIJPSPECIFICATIE

Pipe clas : materiaal en range:

Piping Class	Basis Pijp Materiaal	Corrosie toeslag (mm)	ASME B16.5 Rating (Mat. Groep)	DESIGN LIMITS		Service voorschriften	PWHT	Opm.
				Druk	Temperatuur °C			
C15	ASTM A106-B	1.6 mm	150 (1.1)	ASME B16.5	0 / 399		no	

Overzicht pijp wanddikte:

PipeClass	PijpMat.	Diameter	15	20	25	40	50	80	100	150	200	250	300	350	400	450	500	600
C15	A106-B	Schedule	80	80	80	80	40	40	40	40	30	30	30	20	20	20	20	20

Appendage tabel Pipe Class: C15

Service	Rating Class	Inline afsluiters	Controle afsluiters	Terugslag kleppen	Drain afsluiters	Vent afsluiters	Druk meting afsluiters	Niveau meting afsluiters
LD stoom & LD condensaat	150	\leq DN 40: Gate (SW) \geq DN 50: Gate (FLG/RF)	\leq DN 40: Globe (SW) \geq DN 50: Globe (FLG/RF) \leq DN 350	\leq DN 40: Piston Check (SW) \geq DN 50: Swing Check (FLG/RF)	Gate (SW x THR'D)	Gate (SW x THR'D)	Gate (SW x THR'D)	Gate (FLG/RF)

PIPING DESIGN – TOETS - PIJPSPECIFICATIE

Aftak tabel Pipe Class: C15

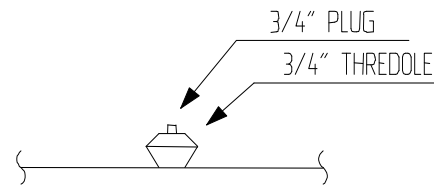
		BRANCH																			
		15	20	25	40	50	80	100	150	200	250	300	350	400	450	500	600	650	700	750	1050
H E A D E R	1050	SOK	SOK	SOK	SOK	WEL	WEL	WEL	WEL	WEL	WEL	WEL	WEL	RTE	RTE	RTE	RTE	RTE	RTE	RTE	TEE
	750	SOK	SOK	SOK	SOK	WEL	WEL	WEL	WEL	WEL	WEL	RTE	RTE	RTE	RTE	RTE	RTE	RTE	RTE	RTE	TEE
	700	SOK	SOK	SOK	SOK	WEL	WEL	WEL	WEL	WEL	WEL	RTE	RTE	RTE	RTE	RTE	RTE	RTE	TEE		
	650	SOK	SOK	SOK	SOK	WEL	WEL	WEL	WEL	WEL	WEL	RTE	RTE	RTE	RTE	RTE	RTE	TEE			
	600	SOK	SOK	SOK	SOK	WEL	WEL	WEL	WEL	WEL	WEL	RTE	RTE	RTE	RTE	RTE	TEE				
	500	SOK	SOK	SOK	SOK	WEL	WEL	WEL	WEL	WEL	WEL	RTE	RTE	RTE	RTE	RTE	TEE				
	450	SOK	SOK	SOK	SOK	WEL	WEL	WEL	WEL	WEL	WEL	RTE	RTE	RTE	RTE	TEE					
	400	SOK	SOK	SOK	SOK	WEL	WEL	WEL	WEL	WEL	RTE	RTE	RTE	RTE	TEE						
	350	SOK	SOK	SOK	SOK	WEL	WEL	WEL	WEL	WEL	RTE	RTE	RTE	TEE							
	300	SOK	SOK	SOK	SOK	WEL	WEL	WEL	WEL	RTE	RTE	RTE	TEE								
	250	SOK	SOK	SOK	SOK	WEL	WEL	WEL	WEL	RTE	RTE	TEE									
	200	SOK	SOK	SOK	SOK	WEL	WEL	WEL	RTE	RTE	TEE										
	150	SOK	SOK	SOK	SOK	WEL	WEL	RTE	RTE	TEE											
100	SOK	SOK	SOK	SOK	WEL	WEL	RTE	RTE	TEE												
80	SOK	SOK	SOK	SOK	WEL	WEL	RTE	RTE	TEE												
50	SOK	SOK	RTE	RTE	TEE																
40	RTE	RTE	RTE	TEE																	
25	RTE	RTE	TEE																		
20	RTE	TEE																			
15	TEE																				
															<u>CODE</u>	<u>DESCRIPTION</u>					
															TEE	Equal Tee					
															RTE	Reducing Tee					
															RTE+R	Reducing Tee (Max. red. Size header/2) + reducer					
															SOK	Branch Fitting (Sockolet)					
															WEL	Branch Fitting (Weldolet)					

PIPING DESIGN – TOETS - PIJPSPECIFICATIE

Samenstellings details **Pipe Class: C15**

Test vents:

LINESIZE 2" – 24"

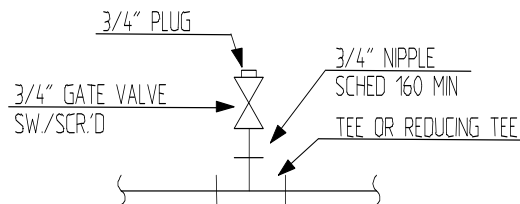


NOTES:

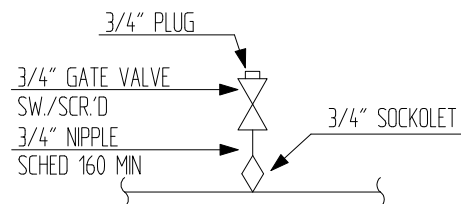
1. PLUG SHALL BE SEAL WELDED AFTER HYDROTEST.
2. CAP SHALL BE SEAL WELDED AFTER HYDROTEST.

Drains:

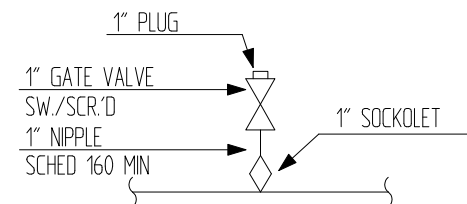
LINESIZE 3/4" – 1 1/2"



LINESIZES 2" – 10"



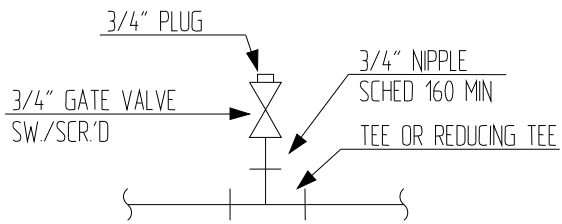
LINESIZES 12" – 22"



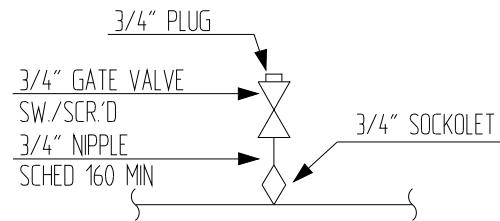
PIPING DESIGN – TOETS - PIJPSPECIFICATIE

Vents:

LINESIZE 3/4" - 1 1/2"

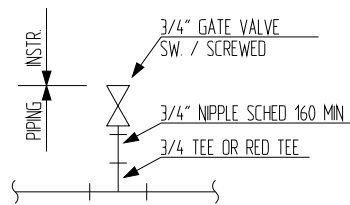


LINESIZES 2" - 24"

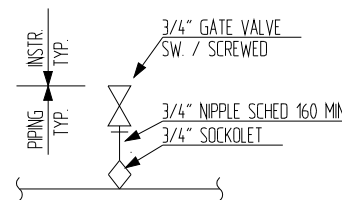


Drukmeting:

LINESIZE 3/4" - 1 1/2"



LINESIZE 2" AND LARGER

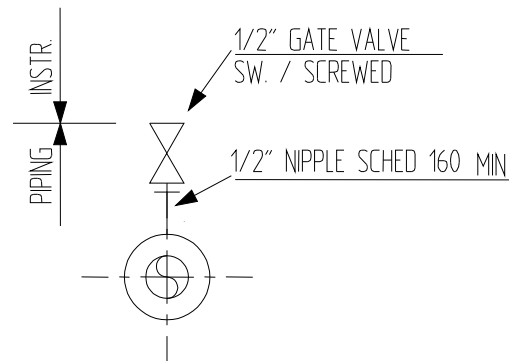


ZADKINE

PIPING DESIGN – TOETS - PIJPSPECIFICATIE

Stromingsmeting:

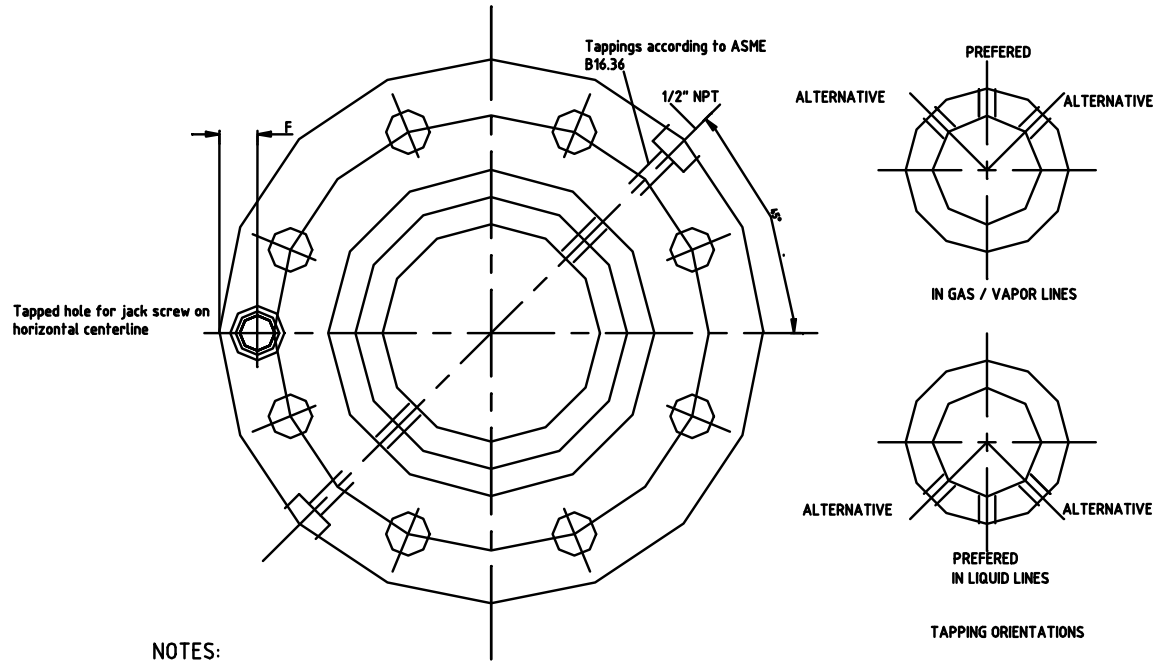
LINESIZE 2" - 24"



PIPING DESIGN – TOETS - PIJPSPECIFICATIE

Bijlage:

1. Stromingsmeting: Orifice flens met tapping orientatie



NOTES:

1. DIMENSIONS ARE IN mm UNLESS OTHERWISE NOTED
2. DESIGN-GENERALLY IN ACCORDANCE WITH ASME B16.36, -"STEEL ORIFICE FLANGES"-, EXCEPT LOCATION OF TAPPING AND TAPPED HOLE FOR JACKSCREW.
3. TAPPING: EACH FLANGE SHALL HAVE ONE TAPPING UNLESS OTHERWISE STATED IN REQUISITION IN mm UNLESS OTHERWISE NOTED IF TWO TAPPINGS PER FLANGE ARE REQUIRED THE POSITION SHALL BE DIAMETRICALLY OPPOSITE

CLASS 300		
NOMINAL PIPE SIZE	POSITION F mm	ANGLE
2"	16	45
3"	20	30
4"		
6"		
8"		
10"	24	45
12"		
14"		
16"		
18"	30	45
20"		
22"		
24"		

CLASS 600		
NOMINAL PIPE SIZE	POSITION F mm	ANGLE
2"	16	45
3"	20	30
4"		
6"		
8"		
10"	24	45
12"		
14"		
16"		
18"	30	45
20"		
22"		
24"		

CLASS 900		
NOMINAL PIPE SIZE	POSITION F mm	ANGLE
2"	16	45
3"	20	30
4"		
6"		
8"		
10"	24	45
12"		
14"		
16"		
18"	30	45
20"		
22"		
24"		

CLASS 1500		
NOMINAL PIPE SIZE	POSITION F mm	ANGLE
2"	16	45
3"	20	30
4"		
6"		
8"		
10"	24	45
12"		
14"		
16"		
18"	30	45
20"		
22"		
24"		

CLASS 2500		
NOMINAL PIPE SIZE	POSITION F mm	ANGLE
2"	16	45
3"	20	30
4"		
6"		
8"		
10"	24	45
12"		
14"		
16"		
18"	30	45
20"		
22"		
24"		